

home electrical safety checklist

Use our checklist to help find any electrical hazards around your home –
and ask a grown up to help you.

1. bedroom

Do you, or any of your family, put drinks on or near electrical equipment, such as computers, games consoles or TV's? Yes ☐ No ☐

Do you, or any of your family, ever leave chargers on after mobile phones, laptops or other electrical equipment have been fully charged? Yes ☐ No ☐

2. living room

Do you have any leads or cables from electrical items trailing across the floor anywhere at home? Yes ☐ No ☐

Do you, or any of your family, use an extension lead or adaptor to plug more than one electrical appliance into a socket? Yes ☐ No ☐

REMEMBER If you need help with anything electrical, ALWAYS ask an adult.



3. bathroom

Do you, or any of your family, ever take electrical appliances, other than an electric toothbrush or electric razor, into the bathroom? Yes ☐ No ☐

4. kitchen

Do any leads from electrical appliances, like a kettle, toaster or microwave, trail across your cooker top? Yes ☐ No ☐

Do you, or any of your family, use a knife to get stuck toast out of your toaster, when it is still plugged in? Yes ☐ No ☐

5. garden

After playing in a paddling or swimming pool do you, or any of your family, go indoors and touch electrical switches or electrical appliances, without drying yourselves fully first? Yes ☐ No ☐

Visit
www.switchedonkids.org.uk
to find more fun ways to
learn about electrical safety



A tick in the 'No' circle means you're switched on and safe – well done



A tick in the 'Yes' circle means you should take a look at our safety tips over the page to help you stay safe at home

Electrical safety tips for around your home

To help you stay safe from fire, electric shock and burns:

1. General

- Always keep drinks away from electrical items such as games consoles, TVs and other electrical equipment.
- Always unplug chargers from the socket after you've finished charging things such as mobile phones, laptops and MP3 players.
- Don't let leads from your electrical equipment trail across the floor – they are a trip hazard and could also get damaged.
- Don't plug too many appliances into one socket using an extension lead or adaptor – visit www.switchedonkids.org.uk to use our socket overload calculator to help you avoid overloading your sockets
- Get an adult to make sure there are no appliance leads from things like kettles, toasters or microwaves trailing across cooker tops.
- If food gets stuck in the toaster, always unplug the toaster before trying to get the food out – and never use a knife or other metal object for this.

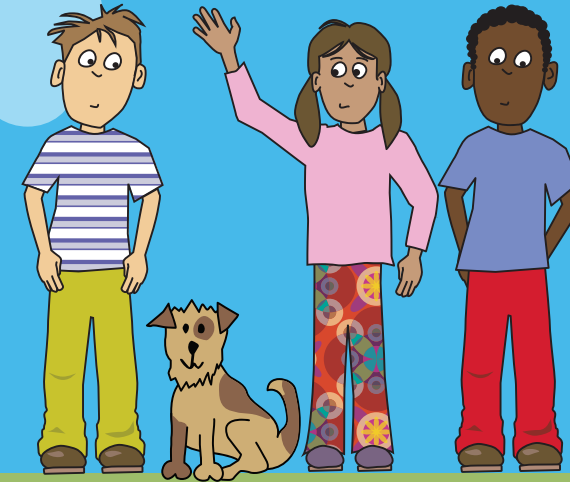
2. Bathroom

- Never take mains-powered electrical equipment such as radios or hair straighteners into the bathroom – water and electricity can be very dangerous together.

3. Garden

- Don't go straight from the paddling pool to indoors without first drying yourself fully. Keep wet hands and bodies away from electrical equipment.

www.switchedonkids.org.uk



Cover



Winner ESC's poster design competition 2012

Zara Miah, age 6, Christ Church Bentinck
C of E Primary School, London

Registered Charity (England and Wales) No. 257376
Registered Charity (Scotland) No. SC039990

www.esc.org.uk

ESC14 ©Electrical Safety Council. March 2013

ELECTRICAL
SAFETY
COUNCIL